

**(주)태일정밀**  
**TAEIL PRECISION CO., LTD.**

#### **Daegu factory**

(43-383, Iyeon-dong) 19, Munhwa-ro 4-gil, Seo-gu, Daegu-si

(42-17, Iyeon-dong) 43-13, Gukchaebosang-ro 7-gil, Seo-gu, Daegu-si

**TEL :** 053-573-1465~8 **FAX :** 053-573-1469 **E-mail :** tl1468@chol.com **Homepage :** www.taeilmould.co.kr

#### **Gyeongsan factory**

83, Gongdan 7-ro, Jillyang-eup, Gyeongsan-si, Gyeongsangbuk-do

**TEL :** 053-719-2465~6 **FAX :** 053-719-2469

#### **Japanese branch**

MS TOOL & DIE CO., LTD.

2070-1, Yoshida, Oizumimachi Ora-Gun, Gunma, Japan

**TEL :** 81-276-55-8495 **FAX :** 81-276-55-8496 **M.P :** 81-90-2319-4560 **E-mail :** t.ara-ms@almond.ocn.ne.jp



# TAEIL

SPECIALIZED MANUFACTURER IN PRESS MOULDS



# CONTENTS

## About Us

- 01 Greetings
- 02 Business Motto, Policy, CI
- 03 About Us
- 04 History
- 05 Organization

## Current Status of the Technology

- 06 R & D Performance

## Manufacturing Facility

- 07 Current Status of Progressive Auto Parts
- 09 Current Status of the Equipment
- 10 Current Status of the Press Equipment
- 12 Current Status of the Processing Equipment

## Products

- 13 Current Status of the Main Parts—Vehicle Body Panel

## Taeil Precision is a trustworthy and high-tech company

Hello, I am Sang-dong Han, CEO of Taeil Precision Co., Ltd.

As a vehicle body parts producer that specializes particularly in manufacturing press molds, Taeil Precision has been leading the 「press mold」 industry for the last 20 years since its foundation in 1993 based on the genuine solidarity of its executives and employees.

We have ceaselessly strived to develop new technology and secure an excellent technical workforce. As a result, Taeil Precision has been developing into a renowned die manufacturer with unmatched quality competitiveness. Moreover, we have built high-quality production control systems by acquiring various certifications, such as ISO 9001:2000, ISO 14001:2008, and SQ-Mark certifications (2004, Class S), and application for and acquisition of intellectual property rights.

With its Technical Research Center founded in October 2004, Taeil Precision has been dedicated to continued research and development to meet customers' needs. Consequently, it was selected as a Venture Firm in the division of new technology in 2005, and as an INNO-BIZ company, an Outstanding SME, and a Promising SME in 2006. In 2007, its active research activities resulted in its selection as a participant in the Support Project for Small Groups for Technological Innovation of Small and Medium Enterprises as well as a company to implement active technological innovative assignments. In addition, it was designated as a Star Company for molds in Daegu in 2011, one of the Top 500 Small and Medium Companies to work for in 2012, and a Top Company with the "Best Work Environment " in 2013. To become a world-class die manufacturer, a new factory was built along with the introduction of a 1,200 ton T/OUT press in 2014 to begin the manufacture of progressive dies. Taeil Precision was not satisfied with all these achievements. It continued to expand its facilities: building a new factory for hot forming in Gyeongsang with the adoption of a machining center in 2015. In July 2015, it was selected again as a Star Company for molds in Daegu.

We will do our utmost to listen to customers' voices more carefully and live up to their expectations for top-notch quality. Taeil Precision also promises to strictly conform to the agreed delivery date. Please continue to support us so that we can grow as a specialized mold manufacturer armed with unparalleled competitiveness.

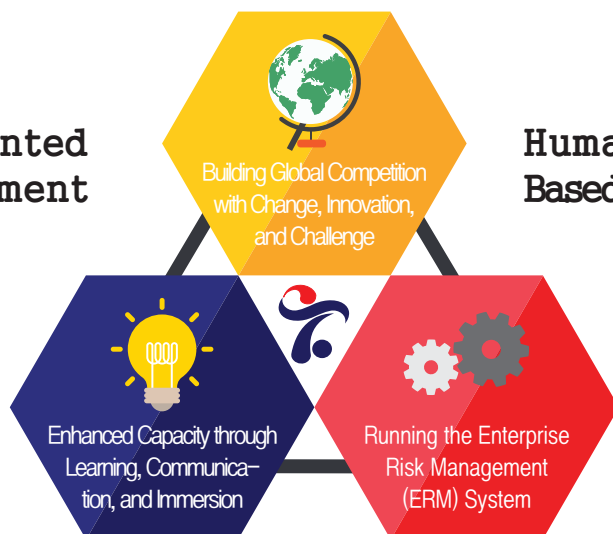
Thank you.

CEO Sang-dong Han



**Future-oriented  
Self-development**

**Human Relations  
Based on Love and Trust**

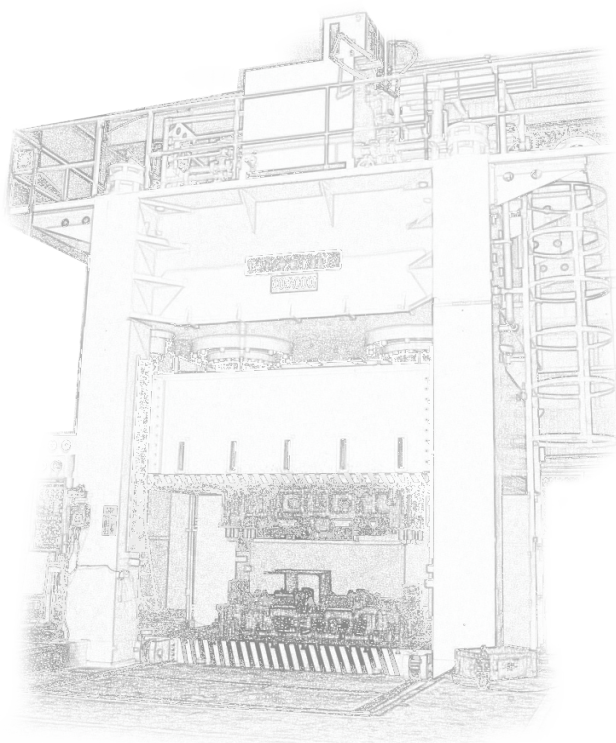


**A Win-win Life**



Taeil's CI consists of a yin-yang symbol and curves derived from the alphabets of its name ([T] and [I]). This presents its vision of infinite growth based on accumulated techniques and expertise combined with balance and dynamics and represents its corporate image of smoothness, warmth, and strength. The [Möbius] strip that means infinity symbolizes the possibility of Taeil's unlimited development. All employees running toward a world-class top-notch company are crystallized as a torch with an emphasis on its future-oriented will. The [blue] color that emphasizes refined beauty and confidence is used to indicate that Taeil is a trustworthy company, whereas the red color expresses its strong volition to make big strides toward the global market with its [enthusiasm] and an [invincible spirit].

|          |   |
|----------|---|
| <b>T</b> | <b>echnology</b><br>Secure Topmost Global Technology                    |
| <b>A</b> | <b>chievement</b><br>Realize Identity through a Sense of Accomplishment |
| <b>E</b> | <b>nergetic</b><br>Cultivate Enthusiasm and an Invincible Spirit        |
| <b>I</b> | <b>nnovation</b><br>Achieve Globalization via Technical Innovation      |
| <b>L</b> | <b>eadership</b><br>Foster a Global Workforce / Greetings               |



# TAEIL PRECISION

## Specialized Press Mold Manufacturer

**Company Name** \_ Taeil Precision Co., Ltd. / CEO

**C E O** \_ Sang-dong Han

### About Factories \_ [Daegu Factory]

- Lot area: 5,248 m<sup>2</sup> (1,588 pyeong), Total floor area: 4,759 m<sup>2</sup> (1,440 pyeong)
- (42-17, Iyeon-dong) 43-13, Gukchaebosang-ro 7-gil, Seo-gu, Daegu-si
- Press mold process and tryout factory



### [Gyeongsan Factory]

- Lot area: 7,554 m<sup>2</sup> (2,285 pyeong), Total floor area: 6,234 m<sup>2</sup> (1,886 pyeong)
- (402, Daewon-ri) 83, Gongdan 7-ro, Jillyang-eup, Gyeongsan-si, Gyeongsangbuk-do
- Press molding and metalwork factory that specializes in hot forming and manufacturing buildups
- Progressive mold process factory



### [Japanese branch]

- MS TOOL & DIE CO., LTD.
- 2070-1, Yoshida, Oizumimachi Ora-gun, Gunma, Japan
- TEL : 81-276-55-8495
- MOB : 81-90-2319-4560



**Quality Certification** \_ ISO 9001 and ISO 14001 Certifications

**S Q M a r k** \_ Hyundai · KiaCar SQ Authentication, Class S sq (2004year)

**Application for industrial property rights** \_ A total of 18 cases (Patent: 10 / Utility model: 2 / Design: 6)

**A w a r d s** \_ Five awards including Outstanding SME Award: SMBA Administrator  
Awarded for developing excellent capital goods/Award Certificate at the Innovative Technology Show: MCEI Minister  
Excellent Daegu SME Award/Small Businessman Award Certificate: Daegu-si  
Selected as a Daegu Star Company in 2012: Daegu-si

# TAEIL HISTORY

## 2013 ~ 2015



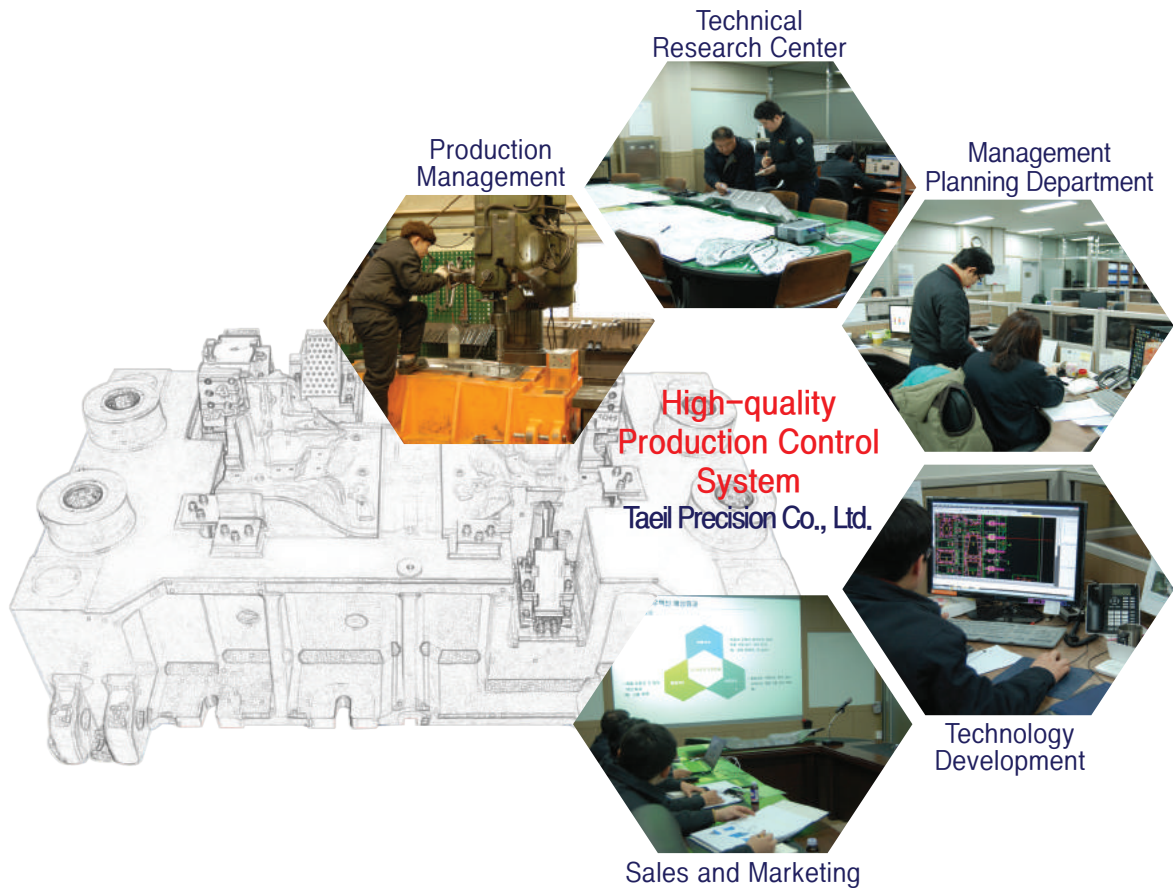
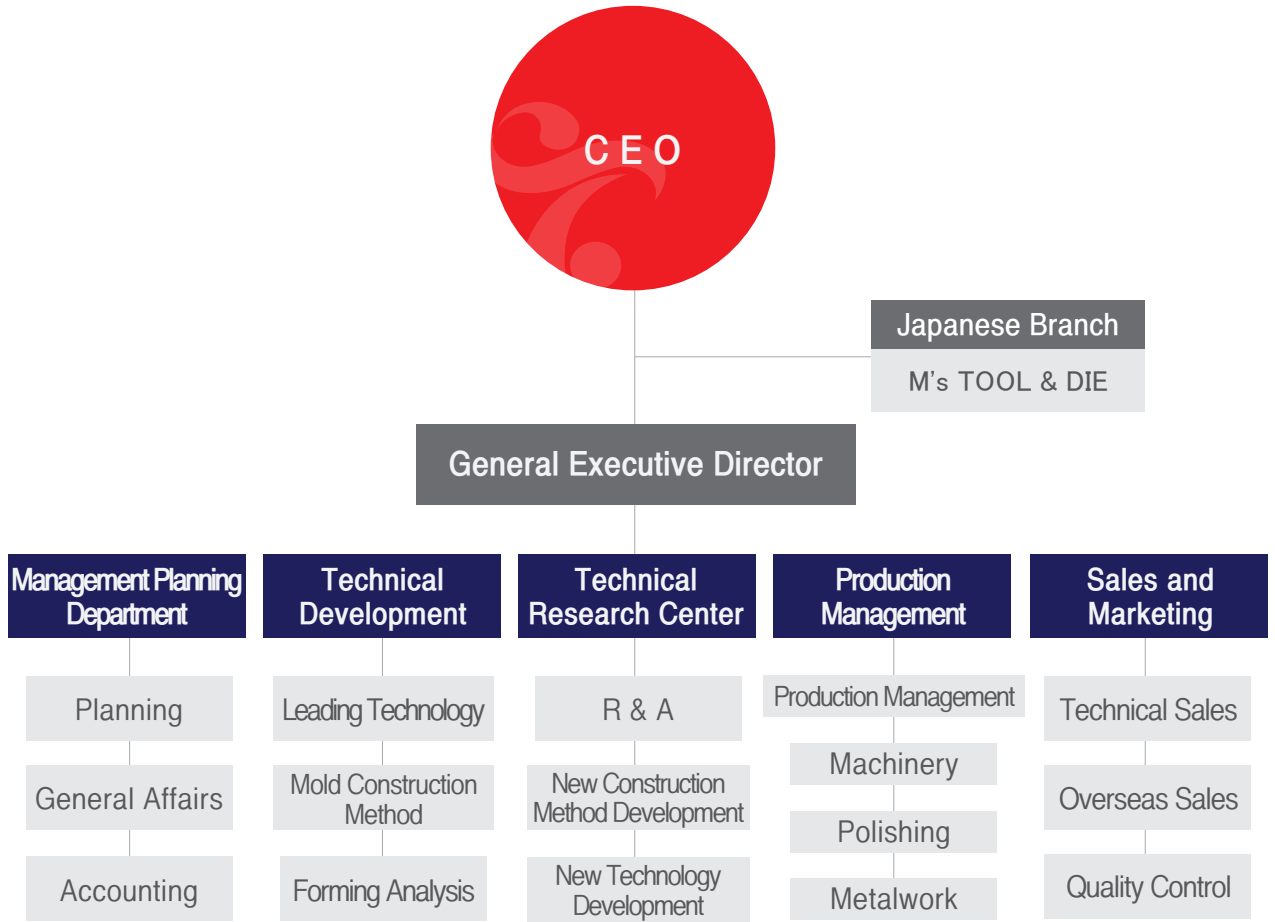
- 2015.10 Signed an MOU about cooperation for technology exchange (with the Japanese company MS TOOL AND DIE)
- 2015.07 Selected as a Daegu Star Company in 2012 (Daegu-si)
- 2015.05 Completed a new factory in Gyeongsan, which specializes in hot forming and manufacturing
- 2015.05 Introduced OKUMA MCR-B III (30 × 50E-A) and MCR-A5C II (25 × 50)
- 2015.01 Selected as an outstanding labor - scholarship organization by the Ministry of Education
- 2014.12 Designated as an SME with Outstanding Employee Development Programs by the SMBA Administrator
- 2014.10 Signed a contract about academy - industry agreement for operating the die framework
- 2014.10 Completed the second factory (43-13, Gukchaebosang-ro 7-gil, Seo-gu)
- 2014.09 Awarded with the Ministerial Prize in the division of cultivating a technical workforce at the Innovative Technology Show 2014 (Ministry of Commerce, Economy and Industry)
- 2014.09 Signed an agreement about establishing a center to cultivate a technical foreign workforce in the root industry (Keimyung College University)
- 2014.07 Selected as an outstanding company for risk assessment (Korea Occupational Safety and Health Agency)
- 2014.06 Selected as a participant in the work-based learning system in 2014 (Ministry of Employment and Labor / Human Resources Development Service of Korea)
- 2014.01 Completed an in-house welfare center
- 2014.01 Selected as a small giant that grows with the youth ((Ministry of Employment and Labor)
- 2013.09 Selected as one of the SMEs to work for in 2013 (INNO-BIZ Association)
- 2013.07 Selected as a MAIN-BIZ (SMBA)
- 2013.06 Selected as a Top Company with Best Work Environment in 2013 (Small and Medium Business Corporation)
- 2013.05 Received an award certificate at the Small Businessmen Awards (Daegu-si)
- 2013.03 Selected in the pilot project for the training provider certification system (Korea Technology and Information Promotion Agency for SMEs)
- 2013.02 Received an award certificate from the SMBA Administrator (SMBA)
- 2013.02 Awarded as an outstanding SME in the division of the root industry (SMBA in Daegu, Gyeongsangbuk-do)

## 1992 ~ 2012



- 2012.09 Selected as one of the Top 500 Small Giants to work for (INNO-BIZ Association)
- 2011.12 Selected as the top SQ business partner by Hyundai (SQ-11-08-022)
- 2011.11 Selected as a Star Company of molds in Daegu
- 2008.10 Designated as a military service provider (Military Manpower Administration)
- 2008.05 Acquired ISO 14001 certification
- 2008.03 Received an exemplary taxpayer award
- 2007.10 Received an award certificate as a contributor to the development of excellent capital goods in 2007 (Ministry of Commerce, Industry and Energy)
- 2007.10 Awarded with a prize as an excellent company at the Daegu SME Awards
- 2006.06 Selected as an INNO-BIZ (SMBA)
- 2006.06 Selected as a Promising SME (SMBA)
- 2006.05 Selected as a specialized parts and materials manufacturer (Ministry of Commerce, Industry and Energy)
- 2006.04 Received the Outstanding SME Award (SMBA)
- 2005.11 Selected as a venture company (SMBA—New Technology Project)
- 2004.10 Founded the Technical Research Center (No. 20042156)
- 2003.04 Acquired ISO 9001:2000 certification
- 2002.03 Renamed as Taeil Precision Co., Ltd.
- 2001.12 Extended the factory (relocated to the Seo-Daegu Industrial Complex)
- 1993.05 Founded Taeil Precision

# TAEIL ORGANIZATION



# TAEIL R&D PERFORMANCE

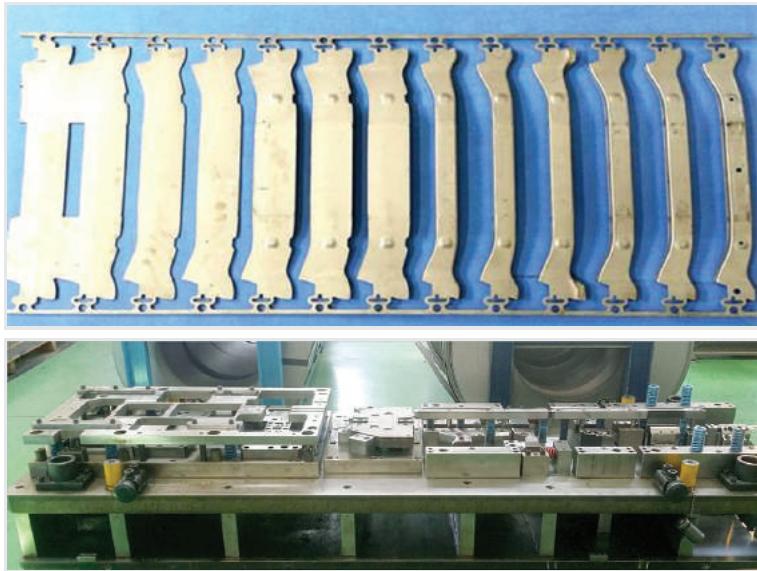
| Name of Developed Technology   | Use and Applications   |
|--|--|
| Developing a wear-plate attachment surface processor for the top-down die guide of a vehicle molding machine                               | Reducing the costs of consumable tools and labor for processing and shortening the period of mold development            |
| Developing a jig for the automatic sparing guide pin assembly of vehicle press dies  | Contributing to work efficiency improvement by minimizing damage to guide parts  |
| Performing the technical development project to advance the technology for lightweight and highly functional automobile dies               | Applying an aluminum forming technology when developing electronic and eco-friendly vehicles                             |
| Molding by replacing with an aluminum-based EXTENSION-S / SILL INR FR  | Improving aluminum-based moldability   |
| Developing a technology for controlling the elastic deformation of a high-strength steel plate by applying a bulk metal forming technology | Improving the accuracy of both the property values of molded articles made with high-strength materials and data figures |
| Supporting the analytical technology for standardized design to reduce heavy/moderate load - absorbing caster                              | Increasing product safety through structural and molding analyses  |
| Developing a technology for forming a high-strength steel plate  | Applying the excessive improvement of S/Back   |
| Accumulating techniques and expertise relating to a platform for bend-/form-type high-strength steel design                                | Applying an elastic deformation database using process variables   |
| Developing a technology for manufacturing CAE-based digital dies   | Predicting expected issues related to molding and shortening the delivery period   |



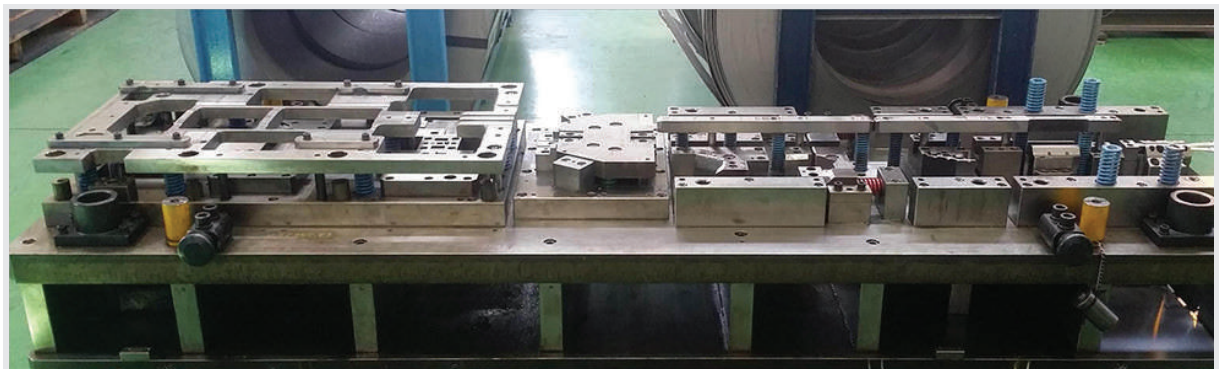
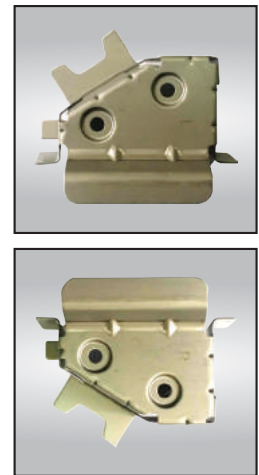


# TAEIL PROGRESSIVE RPRODUCT PARTS STATUS

UPR ARM BRKT (CHASSIS PART)

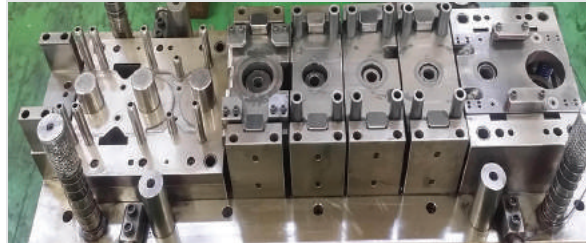


REINF FRT (CHASSIS PART)

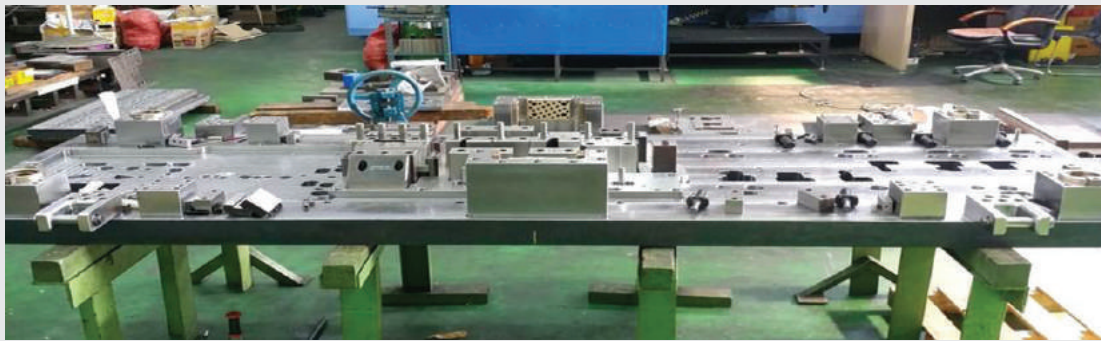


# TAEIL PROGRESSIVE RPRODUCT PARTS STATUS

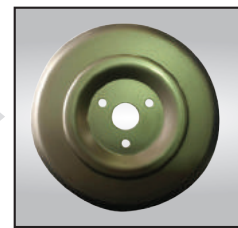
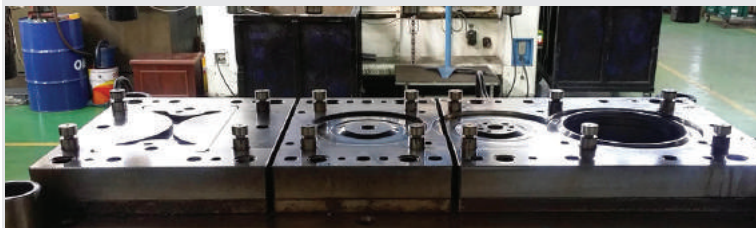
CUP (CHASSIS PART)



HINTNTUER



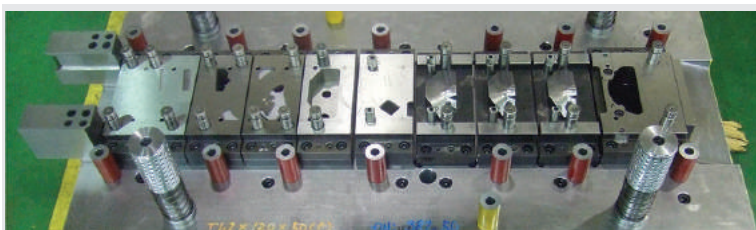
PREFORM (MISSION)



PREFORM (MISSION)



IMP/TURBINE BLADE (MISSION)



# TAEIL EQUIPMENT STATUS

## TRYOUT PRESS & DIE SPOTTING PRESS

| No | EQUIPMENT NAME | MODEL            | TYPE       | BOLSTER SIZE | MAKER    | Q' TY | DATE    | REMARK  |
|----|----------------|------------------|------------|--------------|----------|-------|---------|---------|
| 1  | 1500Ton PRESS  | CL-1500-4P-45-25 | MECHANICAL | 4,500×2,500  | JIWON    | 1     | 2016.05 |         |
| 2  | 1200Ton PRESS  | DE4P-1200        | MECHANICAL | 3,500×2,500  | SIMPAC   | 1     | 2014.08 | 2-MOV'G |
| 3  | 1000Ton PRESS  | CL4-1000         | MECHANICAL | 3,400×2,000  | NATORI   | 1     | 2014.12 |         |
| 4  | 1000Ton PRESS  | DSP 1000/500     | HYDRAULIC  | 3,000×2,000  | DUKSUNG  | 1     | 1996.06 |         |
| 5  | 800Ton PRESS   | KSE 800/400      | MECHANICAL | 3,000×2,000  | KUMSUNG  | 1     | 1993.11 |         |
| 6  | 500Ton PRESS   | 500/300          | HYDRAULIC  | 2,490×1,500  | DAEWOO   | 1     | 1994.11 |         |
| 7  | 500Ton PRESS   | DPD-500          | HYDRAULIC  | 3,500×2,000  | KAWASAKI | 1     | 2015.05 |         |
| 8  | 100Ton PRESS   | DBM-100-400-250  | HYDRAULIC  | 4,000×2,500  | KOJIMA   | 1     | 2015.05 |         |

## DOUBLE-COLUMN MACHINING CENTER & MILLING M/C

| No | EQUIPMENT NAME         | MODEL              | TYPE        | BOLSTER SIZE | MAKER    | Q' TY | DATE    | REMARK     |
|----|------------------------|--------------------|-------------|--------------|----------|-------|---------|------------|
| 1  | D/C MACHINING CENTER   | MCR-B III 30×50E-A | 6000RPM(5면) | 2,500×5,100  | OKUMA    | 1     | 2015.05 | OSP-P300M  |
| 2  | D/C MACHINING CENTER   | MCR-B III 30×50E-A | 6000RPM(5면) | 2,500×5,100  | OKUMA    | 1     | 2016.04 | OSP-P300M  |
| 3  | D/C MACHINING CENTER   | MCR-B III 30×50E-A | 6000RPM     | 2,000×4,100  | OKUMA    | 1     | 2015.08 | OSP-V100M  |
| 4  | D/C MACHINING CENTER   | MCR-A5C II 25×50   | 6000RPM(5면) | 2,000×5,400  | OKUMA    | 1     | 2015.07 | OSP-P300M  |
| 5  | D/C MACHINING CENTER   | MCR-A5C 25×40      | 4000RPM(5면) | 2,000×4,000  | OKUMA    | 1     | 2015.09 | OSP-U100M  |
| 6  | D/C MACHINING CENTER   | MCR-A5C 25×40      | 4000RPM(5면) | 2,000×4,000  | OKUMA    | 1     | 2015.05 | OSP-U100M  |
| 7  | D/C MACHINING CENTER   | MCV-B              | 3000RPM     | 2,000×4,000  | OKUMA    | 1     | 2013.03 | OSP-5020M  |
| 8  | D/C MACHINING CENTER   | MCV-A II           | 4000RPM     | 1,500×3,000  | OKUMA    | 1     | 2002.01 | OSP-7000M  |
| 9  | D/C MACHINING CENTER   | MCV-A              | 2000RPM     | 1,500×4,000  | OKUMA    | 1     | 2015.09 | OSP-5000MG |
| 10 | CNC TABLE BORING M/C   | KBN-135 F16i-MB    | 2000RPM     | 1,800×3,000  | WIA      | 1     | 2015.09 |            |
| 11 | HORIZONTAL BORING MILL | BT-10B(R1)         | 90-1000RPM  | 1,120×1,250  | SHIBAURA | 1     | 2015.09 |            |
| 12 | MILLING M/C            | BM-U8N             | 2000RPM     | 2,900×800    | BONGSHIN | 1     | 2014.12 |            |
| 13 | MILLING M/C            | BM-U8N             | 2000RPM     | 2,900×800    | BONGSHIN | 1     | 2015.06 |            |
| 14 | U/TRANSPORTABLE DRILL  | TUG 60 SP          | 5-800RPM    | 2,000×4,020  | NOVISA   | 1     | 2015.08 |            |

## FACILITY & EQUIPMENT

| No | EQUIPMENT NAME        | MODEL         | SPEC             | MAKER    | Q' TY | DATE    | REMARK |
|----|-----------------------|---------------|------------------|----------|-------|---------|--------|
| 1  | 25/10Ton O/H CRANE    | JB25/10-1409  | SPAN 14,583      | JUNGBO   | 5     | 2014.09 |        |
| 2  | 20/7.5Ton O/H CRAN    | JB20/7.5-1504 | SPAN 21,412      | JUNGBO   | 5     | 2015.05 |        |
| 3  | 15/5Ton O/H CRANE     | JB15/5-1504   | SPAN 15,116      | JUNGBO   | 2     | 2015.05 |        |
| 4  | 15/3Ton O/H CRANE     | HJC15+3-07    | SPAN 10,150      | HANJIN   | 1     | 2005.08 |        |
| 5  | 10/5Ton O/H CRANE     | JB10/5-1505   | SPAN 15,850      | JUNGBO   | 3     | 2015.05 |        |
| 6  | 10/5Ton GANTRY CRANE  | JB10/5-1507   | SPAN 10,706      | JUNGBO   | 1     | 2015.07 |        |
| 7  | 10/3Ton O/H CRANE     | HJC10+3-07    | SPAN 10,150      | HANJIN   | 3     | 2005.08 |        |
| 8  | 10/3Ton O/H CRANE     | SK10+3D-0504  | SPAN             | SEKWANG  | 1     | 2003.06 |        |
| 9  | 7.5/3Ton O/H CRANE    | DHC-208       | SPAN 15,850      | DAIN     | 2     | 2001.12 |        |
| 10 | 7.5/3Ton O/H CRANE    | SK7.5+3-0313  | SPAN             | SEKWANG  | 1     | 2005.03 |        |
| 11 | 5/3Ton O/H CRANE      | SK5+2.8-01    | SPAN             | SEKWANG  | 1     | 2003.07 |        |
| 12 | 1Ton O/H CRANE        | JB1T-1410     | SPAN 3,880       | JUNGBO   | 1     | 2004.09 |        |
| 13 | 1Ton JIB CRANE        | JB1T-1411     | SWING길이:5,000    | JUNGBO   | 1     | 2004.09 |        |
| 14 | RADIAL DRILL & BORING | DRA-J 2000    | 2,235×1,320×T300 | OKUMA    | 1     | 2014.12 |        |
| 15 | RADIAL DRILL & BORING | DRA-J 2000    | 2,235×1,320×T300 | OKUMA    | 1     | 2015.02 |        |
| 16 | RADIAL DRILL & BORING | HOR-D 1700    | 1,080×240T       | OGAWA    | 1     | 2015.02 |        |
| 17 | RADIAL DRILL & BORING | NSR-1500      |                  | NAMSUN   | 1     | 2014.08 |        |
| 18 | RADIAL DRILL & BORING | PRD-1500      |                  | CHANGJO  | 1     | 2014.09 |        |
| 19 | RADIAL DRILL & BORING | HRD-1500      |                  | WHACHUN  | 1     | 2014.11 |        |
| 20 | DIE TRANSPOTER        | 20Ton         | 2,700×2,100      | HANSUNG  | 1     | 2014.09 |        |
| 21 | DIE TRANSPOTER        | 20Ton         | 3,500×2,300      | SHINSUNG | 2     | 2015.05 |        |

# TAEIL PRESS FACILITY STATUS

## 1500TON PRESS (MECANICAL)



| NAME TRYOUT PRESS : JIWON |             |              |             |
|---------------------------|-------------|--------------|-------------|
| MODEL                     | CL4-1500    | CAPACITY     | 1,500Ton    |
| TYPE                      | MECANICAL   | BOLSTER SIZE | 4,500x2,500 |
| DIE HEIGHT                | 1,250/650mm | SLIDE STROKE | 700mm       |
| CUSHION                   | 240Ton      | CUSH. STROKE | 300mm       |

## 1200TON PRESS (MECANICAL)



| NAME TRYOUT PRESS : SIMPAC |             |              |             |
|----------------------------|-------------|--------------|-------------|
| MODEL                      | DE4P-1200   | CAPACITY     | 1,200Ton    |
| TYPE                       | MECANICAL   | BOLSTER SIZE | 3,500x2,500 |
| DIE HEIGHT                 | 1,350/750mm | SLIDE STROKE | 900mm       |
| CUSHION                    | 200Ton      | CUSH. STROKE | 300mm       |

## 1000TON PRESS (MECANICAL)



| NAME TRYOUT PRESS : NATORI |             |              |             |
|----------------------------|-------------|--------------|-------------|
| MODEL                      | NATORI-1000 | CAPACITY     | 1,000Ton    |
| TYPE                       | MECANICAL   | BOLSTER SIZE | 3,400x2,000 |
| DIE HEIGHT                 | 1,060/760mm | SLIDE STROKE | 600mm       |
| CUSHION                    | 130Ton      | CUSH. STROKE | 190mm       |

## 1000TON PRESS (HYDRAULIC)



| NAME TRYOUT PRESS : DUKSUNG |              |              |             |
|-----------------------------|--------------|--------------|-------------|
| MODEL                       | DSP 1000/500 | CAPACITY     | 1,000Ton    |
| TYPE                        | MECANICAL    | BOLSTER SIZE | 3,000x2,000 |
| DIE HEIGHT                  | 1,200mm      | SLIDE STROKE | 1,000mm     |
| CUSHION                     | 500Ton       | CUSH. STROKE | 490mm       |

# TAEIL PRESS FACILITY STATUS

## 800TON PRESS (MECANICAL)



| NAME       |             | TRYOUT PRESS : KUMSUNG |             |
|------------|-------------|------------------------|-------------|
| MODEL      | KSE-800/400 | CAPACITY               | 800Ton      |
| TYPE       | MECANICAL   | BOLSTER SIZE           | 3,000x2,000 |
| DIE HEIGHT | 1,000/700mm | SLIDE STROKE           | 500mm       |
| CUSHION    | 150Ton      | CUSH. STROKE           | 200mm       |

## 500TON PRESS (HYDRAULIC)



| NAME       |           | TRYOUT PRESS : KAWASAKI |             |
|------------|-----------|-------------------------|-------------|
| MODEL      | DPD-500   | CAPACITY                | 500Ton      |
| TYPE       | HYDRAULIC | BOLSTER SIZE            | 3,500x2,000 |
| DIE HEIGHT | 2,500mm   | SLIDE STROKE            | 1800mm      |
| CUSHION    | 120Ton    | CUSH. STROKE            | 400mm       |

## 500TON PRESS (HYDRAULIC)



| NAME       |           | TRYOUT PRESS : DAEWOO |             |
|------------|-----------|-----------------------|-------------|
| MODEL      | 500/300   | CAPACITY              | 500Ton      |
| TYPE       | HYDRAULIC | BOLSTER SIZE          | 2,490x1,500 |
| DIE HEIGHT | 1,100mm   | SLIDE STROKE          | 850mm       |
| CUSHION    | 100Ton    | CUSH. STROKE          | 200mm       |

## 100TON D/S PRESS (HYDRAULIC)



| NAME       |           | DIE SPOTTING PRESS : KOJIMA |             |
|------------|-----------|-----------------------------|-------------|
| MODEL      | DBM-100   | CAPACITY                    | 100ton      |
| TYPE       | HYDRAULIC | BOLSTER SIZE                | 4,000x2,500 |
| DIE HEIGHT | 2,500mm   | SLIDE STROKE                | 1,900mm     |
| CUSHION    | -         | MICRO INCH'G                | USE         |

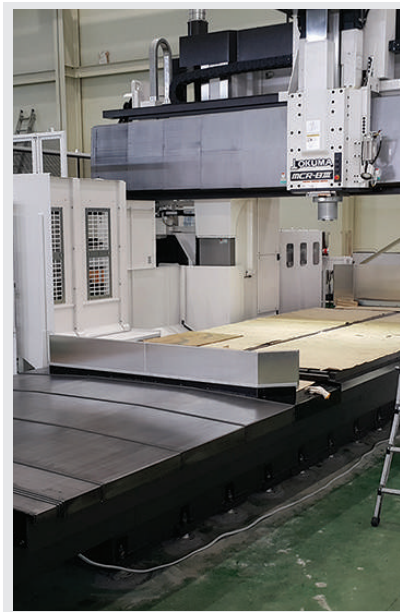
# TAEIL PROCESSING FACILITY STATUS

**MACHINING CENTER**



| NAME       | DOUBLE-COLUMN MACHINING CENTER |              |           |
|------------|--------------------------------|--------------|-----------|
| MODEL      | MCR-B III 30x50E-A             |              |           |
| TABLE SIZE | 2,500x5,100                    | RPM          | 6,000     |
| NO OF SIDE | 5-SIDED                        | OPTION       | OSP-P300M |
| MAKER      | OKUMA                          | INSTALL YEAR | 2015.05   |

**MACHINING CENTER**



| NAME       | DOUBLE-COLUMN MACHINING CENTER |              |           |
|------------|--------------------------------|--------------|-----------|
| MODEL      | MCR-B III 30x50E-A             |              |           |
| TABLE SIZE | 2,500x5,100                    | RPM          | 6,000     |
| NO OF SIDE | 5-SIDED                        | OPTION       | OSP-P300M |
| MAKER      | OKUMA                          | INSTALL YEAR | 2016.04   |

**MACHINING CENTER**



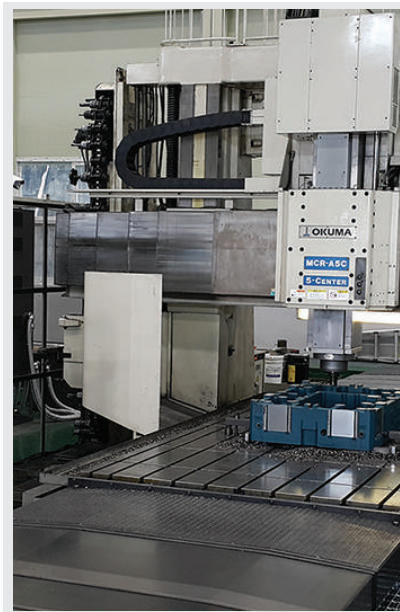
| NAME       | DOUBLE-COLUMN MACHINING CENTER |              |           |
|------------|--------------------------------|--------------|-----------|
| MODEL      | MCR-A5C II 25x50               |              |           |
| TABLE SIZE | 2,000x5,400                    | RPM          | 6,000     |
| NO OF SIDE | 5-SIDED                        | OPTION       | OSP-P300M |
| MAKER      | OKUMA                          | INSTALL YEAR | 2015.07   |

**MACHINING CENTER**



| NAME       | DOUBLE-COLUMN MACHINING CENTER |              |           |
|------------|--------------------------------|--------------|-----------|
| MODEL      | MCR-B II 25x40E-A              |              |           |
| TABLE SIZE | 2,000x4,100                    | RPM          | 6,000     |
| NO OF SIDE | -                              | OPTION       | OSP-V100M |
| MAKER      | OKUMA                          | INSTALL YEAR | 2015.08   |

**MACHINING CENTER**



| NAME       | DOUBLE-COLUMN MACHINING CENTER |              |           |
|------------|--------------------------------|--------------|-----------|
| MODEL      | MCR-5AC 25x40                  |              |           |
| TABLE SIZE | 2,000x4,000                    | RPM          | 4,000     |
| NO OF SIDE | 5-SIDED                        | OPTION       | OSP-U100M |
| MAKER      | OKUMA                          | INSTALL YEAR | 2015.05   |

**MACHINING CENTER**



| NAME       | DOUBLE-COLUMN MACHINING CENTER |              |           |
|------------|--------------------------------|--------------|-----------|
| MODEL      | MCR-5AC 25x40                  |              |           |
| TABLE SIZE | 2,000x4,000                    | RPM          | 4,000     |
| NO OF SIDE | 5-SIDED                        | OPTION       | OSP-U100M |
| MAKER      | OKUMA                          | INSTALL YEAR | 2015.09   |

# TAEIL MAIN PRODUCT PARTS STATUS

— Parts — Vehicle Body Panel

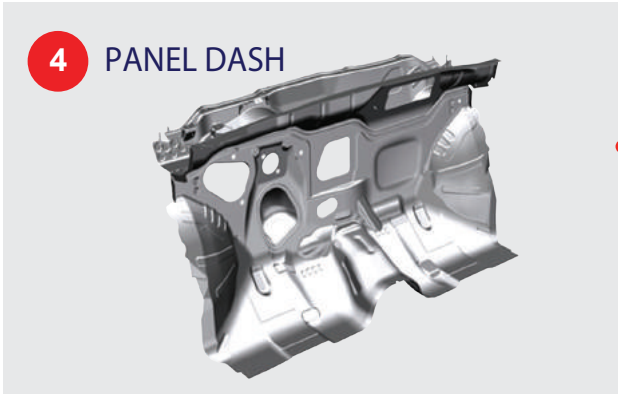
1 HOOD OTR



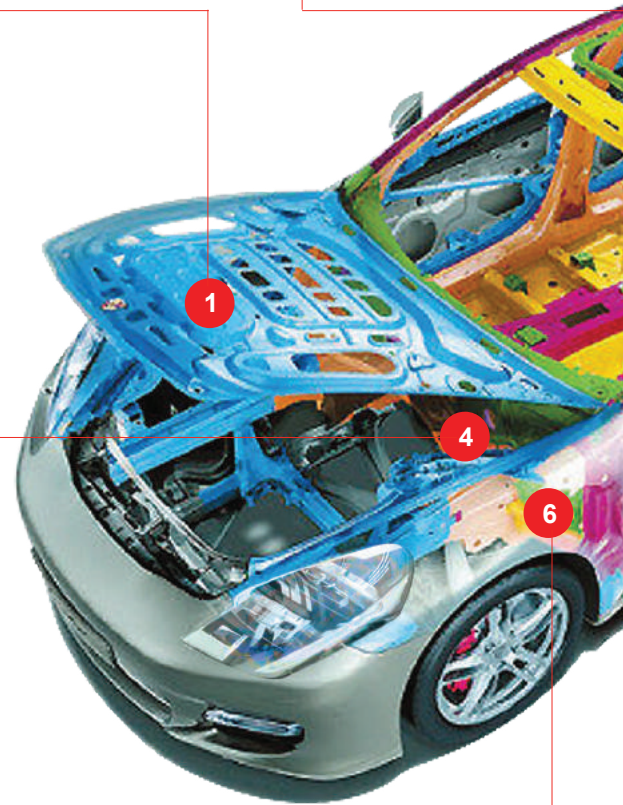
2 PANEL ROOF



4 PANEL DASH



6 PANEL FENDER



# TAEIL MAIN PRODUCT PARTS STATUS

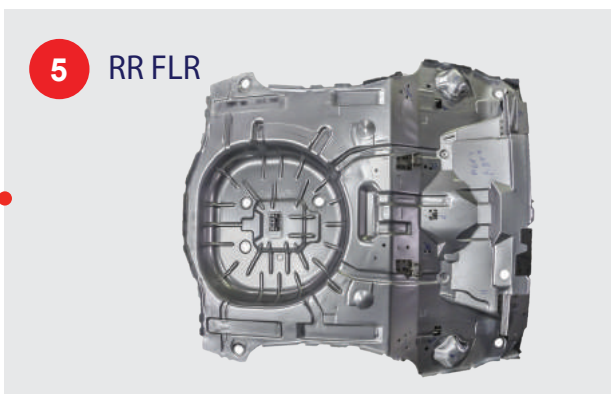
— Parts—Vehicle Body Panel



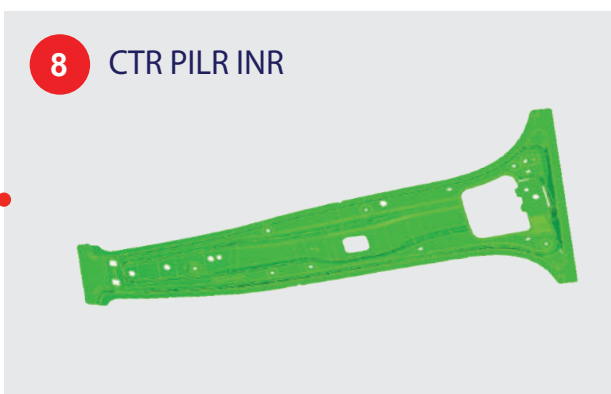
**3** TAIL GATE OTR



**5** RR FLR



**8** CTR PILR INR



**7** FRT DOOR OTR

